



# Armstrong Venturi Tube Flow Meter

## Venturi Tube Flow Meter

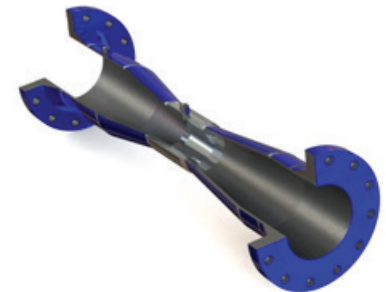
Venturi tubes have long been specified and used in a multitude of flow measurement applications. The versatility of measurable fluids, line sizes, and material of construction available to a Venturi tube flow meter has made it a highly recognized differential pressure flow element.

Armstrong offers classical style Venturi tubes – short form and long form – manufactured in accordance with applicable ASME codes. Also available is the Halmi Venturi tube which features superior performance and design with shorter laying lengths and reduced cost.

General Venturi Specifications	
<b>Accuracy</b>	±0.5% up to ±0.25% with calibration
<b>Beta Ratio</b>	Customizable between 0.30 through 0.75
<b>Permanent Pressure Loss</b>	5% to 20% dependent on Beta Ratio
<b>Line Size</b>	3/8" through 144" (9.525mm through 3657.6mm)
<b>End Connection</b>	Flange, weld, plain end, mechanical joint, or other
<b>Material of Construction</b>	CS, SS, Duplex SS, Chrome Moly, Aluminum, Hastelloy, Monel, Inconel, Zirconium, Titanium, Tantalum, Cast and Ductile Iron
<b>Operating Pressure and Temperature</b>	As limited by the materials of construction

## Common Applications

- Clean gases and liquids
- Potable water
- High pressure steam
- Combustion air
- Compressor surge control
- Process measurement (alcohol, ethylene, chlorine, etc.)
- Gas oxygenation
- Storm sewage
- Solids-bearing fluids
- Higher viscosity liquids



## Available Models and Configurations

### Classical Venturi

- In-line, insert, and eccentric designs
- Flanged, weld-in, socket weld, butt weld connections
- Meter runs

### Bi-Directional Venturi

- Classical and Halmi designs
- Cast, fabricated, plastic
- In-line, insert
- Flanged, weld-in, butt weld

### Halmi Venturi

- Fabricated
- In-line, insert
- Flanged, weld-in, socket weld, butt weld, threaded, grout-in, wafer
- Meter runs, static tap, low flow, elbow mount

### Plastic Venturi

- Insert
- Flanged, weld-in, grout-in
- Meter runs, static tap